

Avro Anson Mk.1 Detail Set

FP-72-020

Although currently out of production there are many people who would like a well-detailed 'Annie', and who have the Airfix kit as part of their loft insulation.

The majority of part numbers referred to in these instructions correspond to those etched on the brass fret, while the circled numbers on the drawings refer to the kit part numbers. Any shading of kit parts shown indicates where areas have to be removed.

Many of the parts in this set are handed, and some of these are laminated. They are only awarded one part number but common sense will tell you which are port and which are starboard.



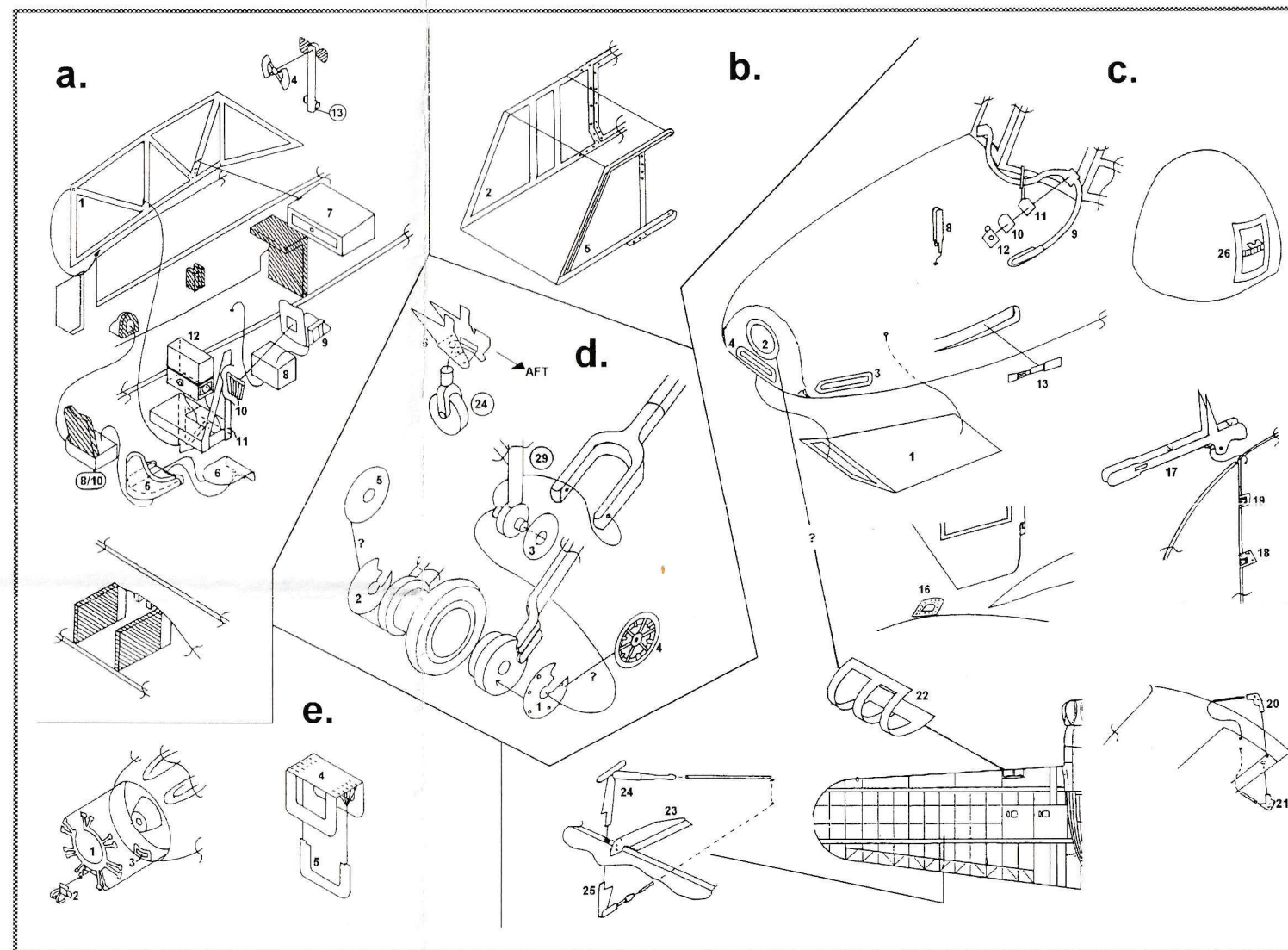
Trefacwn Fach,
Llanrhian,
St. Davids, Pembrokeshire,
SA62 6DP, Wales, UK.

Assembly

Section A - Interior

1. Parts 1 & 2 should be fitted inside the kit fuselage halves, as shown. Remove the shaded area from the mouldings. The instrument panel overlay [3] should be fitted to kit part 12, and part 4 added to control stick [kit part 13], after removing shaded area. An extra one of these is included, in case you wish to model a dual control machine.

2. Assemble parts 5 & 6 to make two seat units. Remove shaded areas from kit seats 8 & 10, and fit these on top. Fit completed seats in the normal way.



3. Form chart desk from part 7 and fit to part 1, where indicated by line. Solder is best here, if you can. Make navigator's seat from parts 8-10, and fit to floor behind desk [7].

4. Form up wireless operator's table and fit to part 1, where indicated. Again, soldering is best. Form and fit part 12 to top of table in part

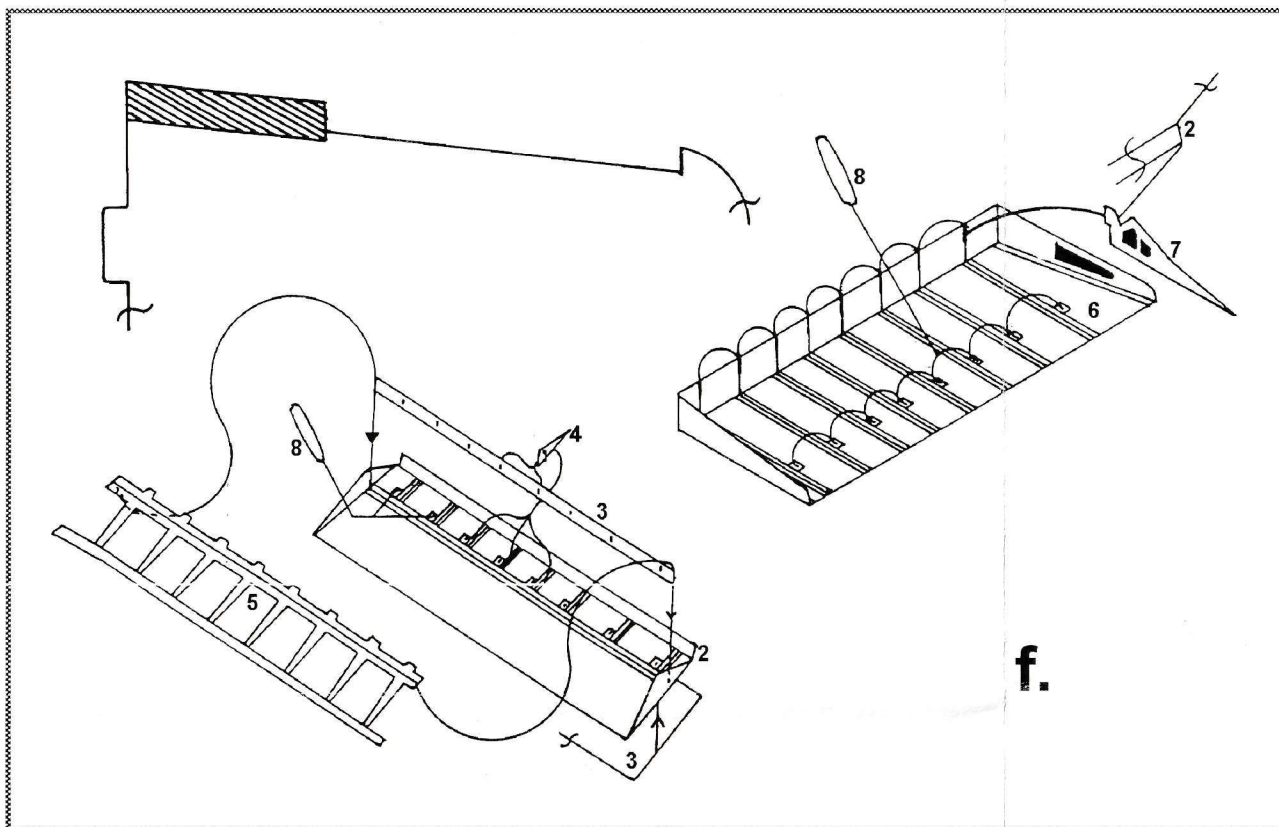
11, where indicated. Put on headphones and tune in!

Section B - Framing

Note - all glazing is best done with a thin acetal sheet like .005 cobex. The only exception to this is the glazing of the cockpit roof framing [part 8], which will require a compound curve.

The shape of the canopy in the kit is totally wrong and this, and all other clear parts, should be discarded.

It is a good idea to purchase from Aeroclub their vac-formed set of canopy and turret dome. If you should do this, only use the upper section of it to glaze part 8. The fit of the windscreens [parts 6 & 7] to the lower part of the Aeroclub



canopy is *not* guaranteed. These parts should be glazed individually.

It is recommended that all the parts in this section are glazed after painting, and then fitted to the finished aircraft. The interior can easily be masked off whilst spraying the airframe.

1. Fit main side window frames [1 & 2] in place, adding parts 3 to rear port window. Glaze and fit sliding cab side windows [4 & 5] over parts 1 and 2.

2. Fit windscreen halves [6 & 7] in place, adding cockpit top framing [8] - noting the comments made at the start of this section.

3. Fit the two parts 9 over the two apertures in the cabin roof.

Section C - Airframe Details

1. Glaze and fit part 1 under nose, as shown, discarding kit part 20. Part 1 is a landing light frame, which you can fit to the nose, or, for an alternatively fitted aircraft, part 22 can be fitted to the leading edge of the port wing.

2. Parts 3 and 4 are frames for the small nose windows fitted on some Mk.1s - part 3 at the sides - part 4 at the front. Obviously you can use these as templates for cutting out the window apertures in the kit.

3. Parts 6 and 7 are alternative replacements for kit part 25. Whichever you use, laminate and fit via base [part 5]. Laminate parts 14 and 15 and use these to replace kit parts 19 & 23, respectively. Add gun detail overlay [13] over

the gun in the port side nose. Laminate parts 8 and add to parts, where shown.

4. Assemble and fit windscreen wiper assy. using parts 9-12. If you are using the Aeroclub vac-formed turret dome, we supply some framing [26], which you can also use as a template for cutting the gun aperture in the moulding. In addition, Aeroclub produce a pack of Lewis guns, and one of these is ideal for replacing kit part 14. If you do use one of these, we supply an etched overlay for the Lewis gun magazine [part 27].

5. Fit step frame to fuselage door on starboard side, and form, laminate and fit parts 17 to top of fin, and rudder hinge points [18 & 19], where indicated.

6. Fit flap actuators etc. using parts 23-25, and to tailplane, using parts 20.

Section D - Undercarriage

1. Add parts 2 to the outer faces of wheel hubs, and parts 2 to the inner faces. Fit parts 3 to kit parts 29 & 33, as shown.

2. In case you wish to model the later undercarriage, we include parts 4 and 5 as inner and outer hub units. These should be fitted directly to the wheels and kit parts 26, 27, 30 & 31 discarded. You will have to make new yokes from brass rod, or similar. Parts 3 should be fitted, as in para. 1 above.

3. Fold and fit rear undercarriage unit [6], as shown, adding wheel [kit part 24].

Section E - Engines

1. Fit ignition lines [1] into front of each nacelle, adding part 2. Part 3 should be fitted inside the lower front edge of each nacelle.

2. Replace kit parts 49 with the etched assembly constructed from parts 4 and 5. Note that the detailed sides of parts 5 should all face in the most visible direction when the assemblies are installed on each nacelle - you can see the detail - honest!

Note - Aeroclub produce some cast replacement propellers for the Anson, which are well worth adding.

Section F - Wing flap assemblies

Note - port and starboard flap assys. are a mirror image of each other. Also, on each unit the detailed faces of parts 4 and 8 should face outwards.

1. Remove the areas shown from each lower wing half.

2. Assemble a flap unit, as shown, using parts 1-5.

3. Assemble wing tray unit from parts 6 and 7.

4. Fit flap unit into rebates in the eight parts 7 in wing tray. Fit the struts 8 into the slots in the wing tray and the rebates in part 2 of the wing flap assy. Glue the completed unit into the wing.

Repeat for other assembly.